

NOTES: (UNLESS OTHERWISE SPECIFIED)

1. THIS ASSEMBLY IS A DUAL MODE (WHITE/VISIBLE AND IR) SEARCHLIGHT. EXCLUDING THE EXTERNAL HARNESS, THE SEARCHLIGHT ENVELOPE MEETS THE REQUIREMENTS OF MIL-L-81174/2B.

2. ILLUMINATION CHARACTERISTICS:

- A. BEAM SPREAD (WHITE): 9° - 10°
B. CANDLEPOWER: 480,000 CD TYP.
C. BEAM SPREAD (IR): 20° x 20° TYP (10% OF PEAK)
D. VISIBLE RADIANT INTENSITY: 180 W/SR MIN. (CLASS A)
E. IR RADIANT INTENSITY: 80 W/SR MIN. (CLASS A)

3. ELECTRICAL CHARACTERISTICS:

- | | | |
|----|--|--|
| A. | INPUT VOLTAGE: | 28 VDC NOMINAL, 22 VDC MIN, 32 VDC MAX |
| B. | MAX. POWER OF VISIBLE/WHITE ILLUMINATION: | 170 WATTS |
| C. | MAX. POWER OF IR ILLUMINATION: | 30 WATTS |
| D. | MAX. POWER @ MAX DEPLOYMENT SPEED WHILE
EXTENDING & ROTATING & WHITE LIGHT
AT 32VDC MAX: | 234 WATTS |
| E. | MAX. POWER @ MAX DEPLOYMENT SPEED WHILE
EXTENDING & ROTATING AT 32VDC MAX: | 64 WATTS (32 WATTS PER MOTOR) |

- 4 MATING SURFACES CORRESPONDING TO THE INDICATED FAYING SURFACES ON THE SEARCHLIGHT BASE SHALL BE ELECTRICALLY CONDUCTIVE TO FACILITATE BONDING/GROUNDING OF THE SEARCHLIGHT CHASSIS.

5. SEARCHLIGHT CONTROL SWITCHES AND INTERCONNECT WIRING ARE CUSTOMER SUPPLIED AND ARE NOT INCLUDED AS PART OF THE SEARCHLIGHT.

6. MAXIMUM WEIGHT: 7.80 LBS

- 7 MARKING:
ASSEMBLY SHALL BE IDENTIFIED IN ACCORDANCE WITH LPS-258.

8. FINISH:

THE EXTERNAL COVERS, BASE, AND ROTATION HOUSING ARE CHEMICAL CONVERSION COATED PER MIL-DTL-5541, FOLLOWED BY ONE COAT OF PRIMER HMS 15-1100 TYPE 1, CLASS 2, GRADE N, AND TWO COATS OF FLAT BLACK POLYURETHANE PAINT PER MIL-C-46168, TYPE IV, COLOR NO. 37038 PER FED-STD-595.

ALL SURFACES OF THE SEARCHLIGHT HEAD ARE CHEMICAL CONVERSION COATED PER MIL-DTL-5541, AND EXTERNAL SURFACES FURTHER ANODIZED PER MIL-A-8625 (BLACK).

9. THE SEARCHLIGHT IS CAPABLE OF EXTENDING AT A MAXIMUM AIRSPEED OF 120 KNOTS AND WILL HOLD ANY POSITION UP TO 180 KNOTS.

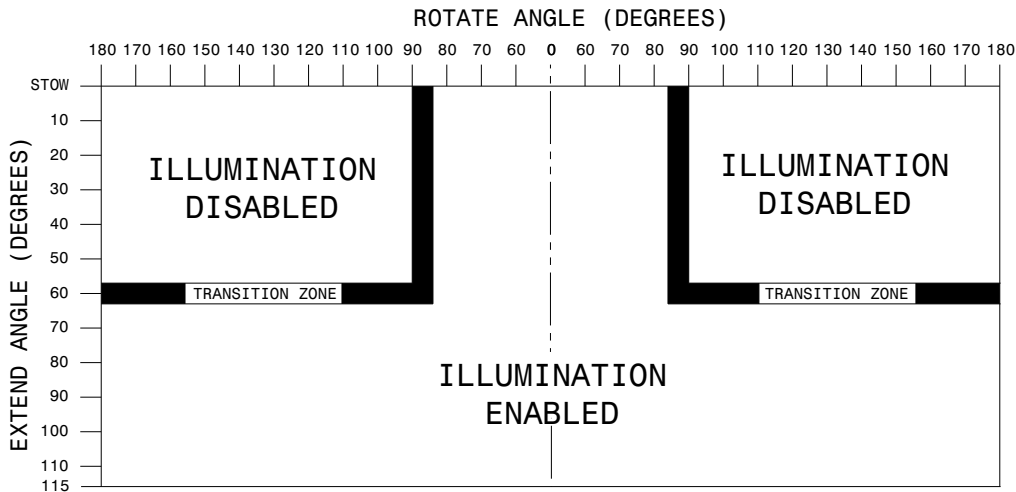
10. IR SAFETY:
WHEN "IR" IS ILLUMINATED, APPROPRIATE IR SAFETY GLASSES ARE REQUIRED BY ANY PERSONNEL UP TO 3 METERS FROM THE SEARCHLIGHT. THE IR CAN BE ILLUMINATED WITH OR WITHOUT THE WHITE LIGHT ENABLED. WHITE/VISIBLE OR IR ILLUMINATION CAN BE ENABLED WHENEVER POWER IS SUPPLIED TO THE SEARCHLIGHT.

11. REQUIRED MOUNTING HARDWARE: QUANTITY 4 OF #8-32UNC FASTENERS.

CALCULATION OF MAXIMUM FASTENER LENGTH = 0.315" + AIRFRAME / MOUNTING SURFACE THICKNESS.

MOUNTING FASTENER LENGTHS SHALL NOT EXCEED THE MAXIMUM AS SPECIFIED HEREIN. SEARCHLIGHT MOVEMENT
 WILL BE IMPAIRED, BIND AND MAY BE DAMAGED IF MOUNTING SCREW LENGTH PROTRUDE FURTHER THAN 0.315" INTO
 THE SEARCHLIGHT, AS MEASURED FROM THE OUTER SURFACE OF THE SEARCHLIGHT BASE.

12. SEARCHLIGHT ILLUMINATE MAY BE ENABLED, EITHER VISIBLE/WHITE OR IR, WHEN EXTEND AND ROTATE ANGLES INTERSECT WITHIN "ILLUMINATION ENABLED" AREAS PER THE FIGURE BELOW. THE SEARCHLIGHT WILL NOT ILLUMINATE WHEN THE SEARCHLIGHT EXTEND AND ROTATE ANGLES INTERSECT WITHIN EITHER OF THE "ILLUMINATION DISABLED" AREAS. THE SEARCHLIGHT MAY OR MAY NOT ILLUMINATE WITHIN THE TRANSITION ZONES.

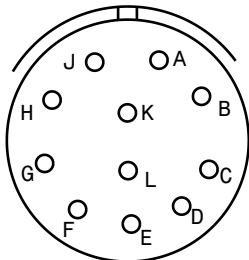


13. QTP NUMBER: 909775
QTR NUMBER: 909775

14. CONNECTOR PART NUMBER: D38999/26WF11PN

- ### 15. CONNECTOR PIN ASSIGNMENT:

PINOUT	
A	EXTEND CMD
B	+28 VDC
C	ROTATE RIGHT
D	ROTATE LEFT
E	RETRACT CMD
F	WHITE LAMP CMD
G	IR LAMP CMD
H	RETURN
J	IR PWM
K	N/C
L	N/C



CONNECTOR PINS

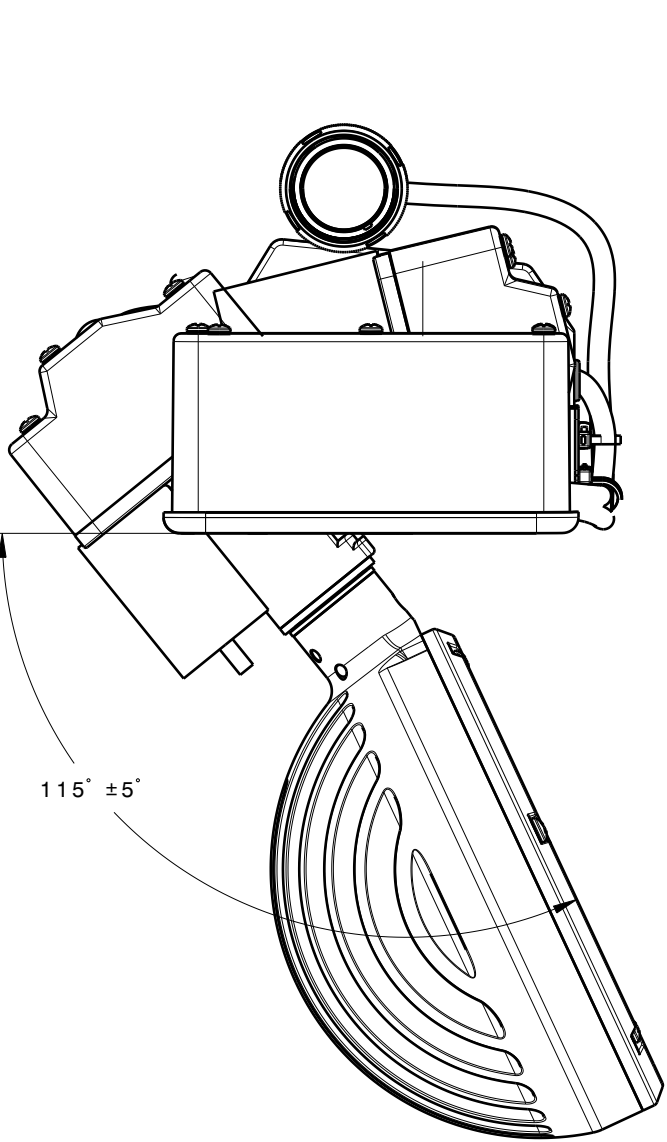
REFER TO TOP LEVEL ASSEMBLY DRAWING

INTERFACE CONTROL DRAWING

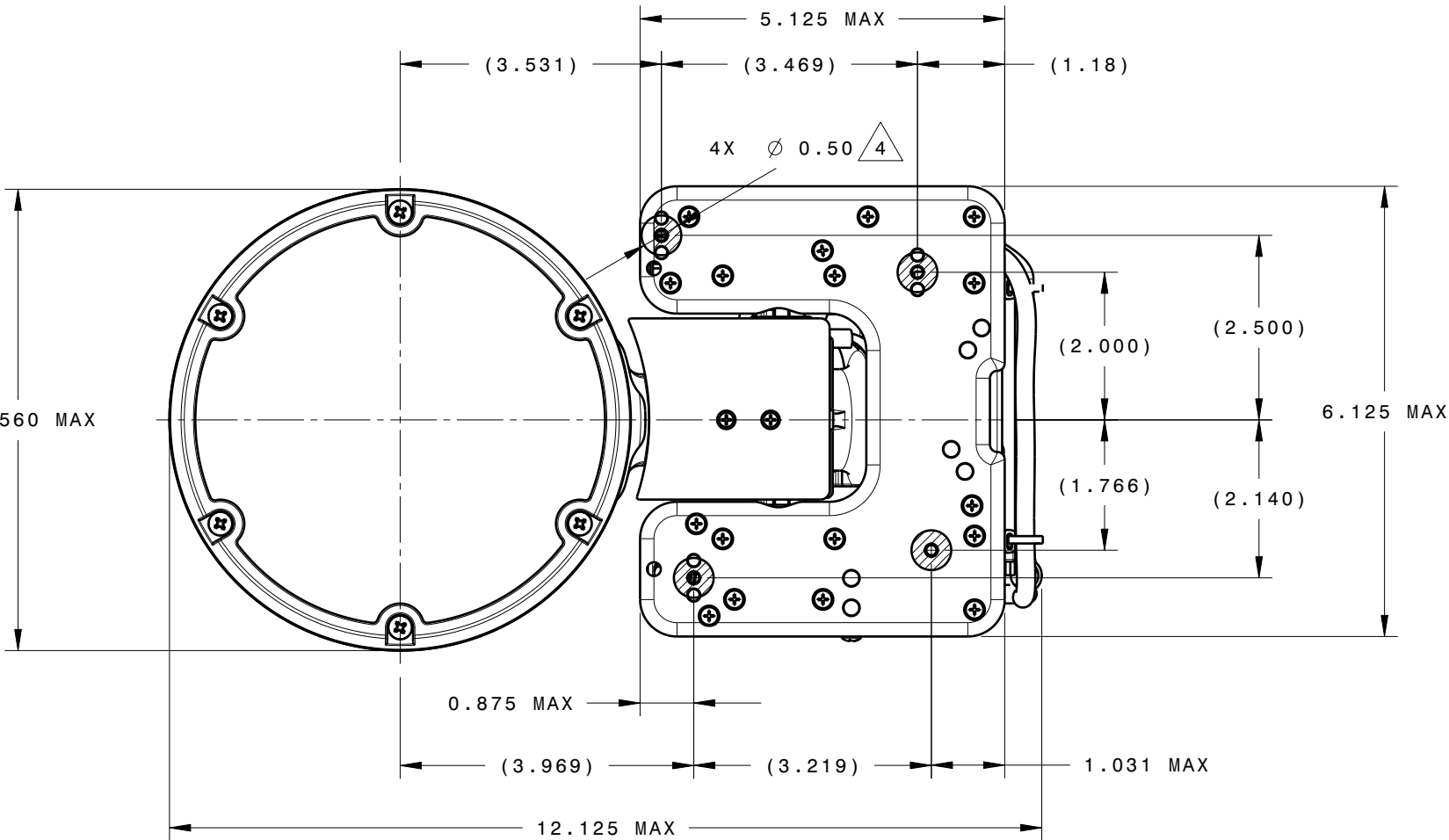
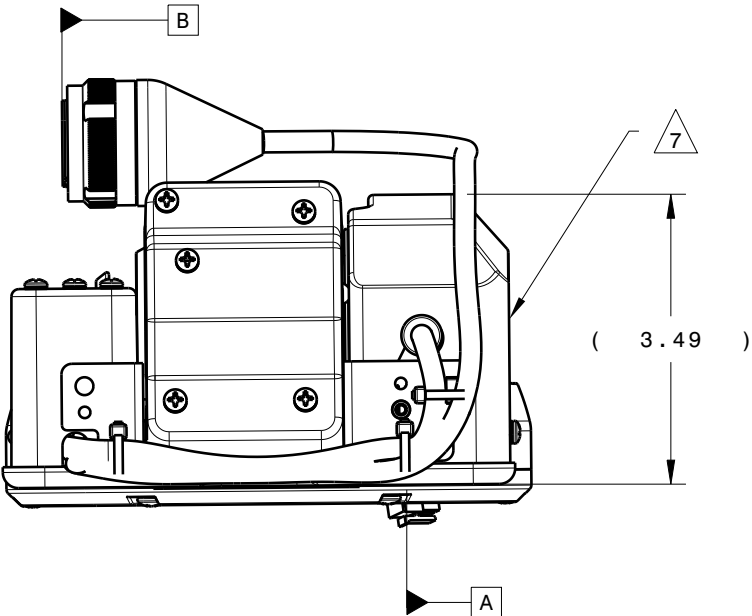
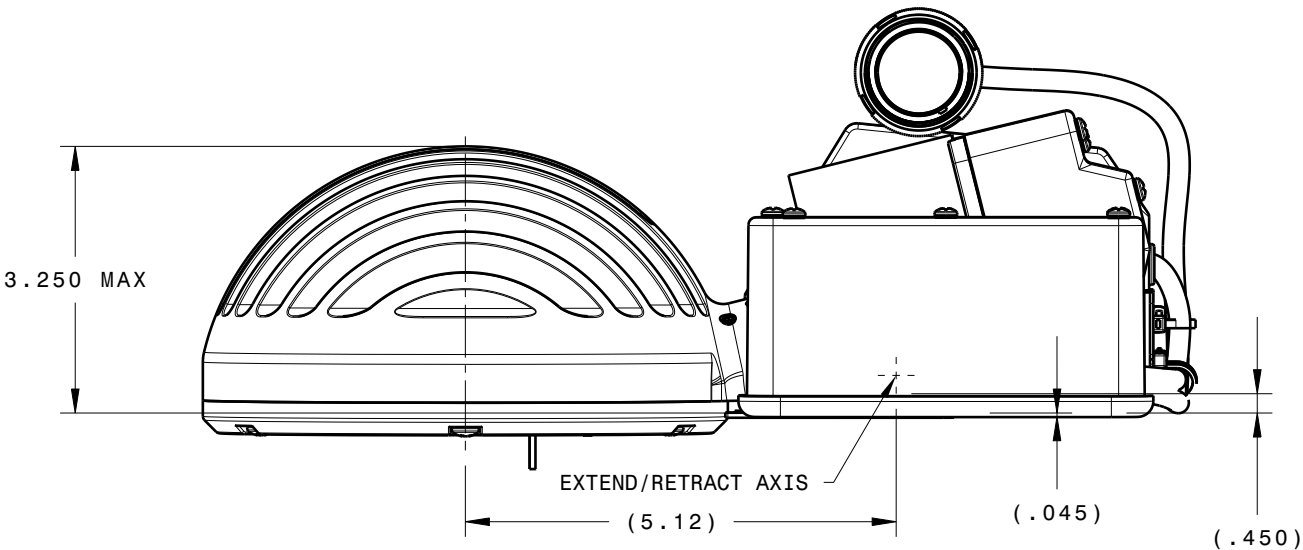
[illegible]

PART NUMBER: 0231760-101

CABLE LENGTH		
TO	FROM	LENGTH (IN)
A	B	18.00 +/- .50



EXTENDED VIEW



PART NUMBER: 0231760-101

THE INFORMATION CONTAINED ON THIS DOCUMENT IS PROPRIETARY TO LUMINATOR HOLDING, L.P., AND SHALL NOT BE USED OR REPRODUCED WITHOUT PRIOR WRITTEN CONSENT.



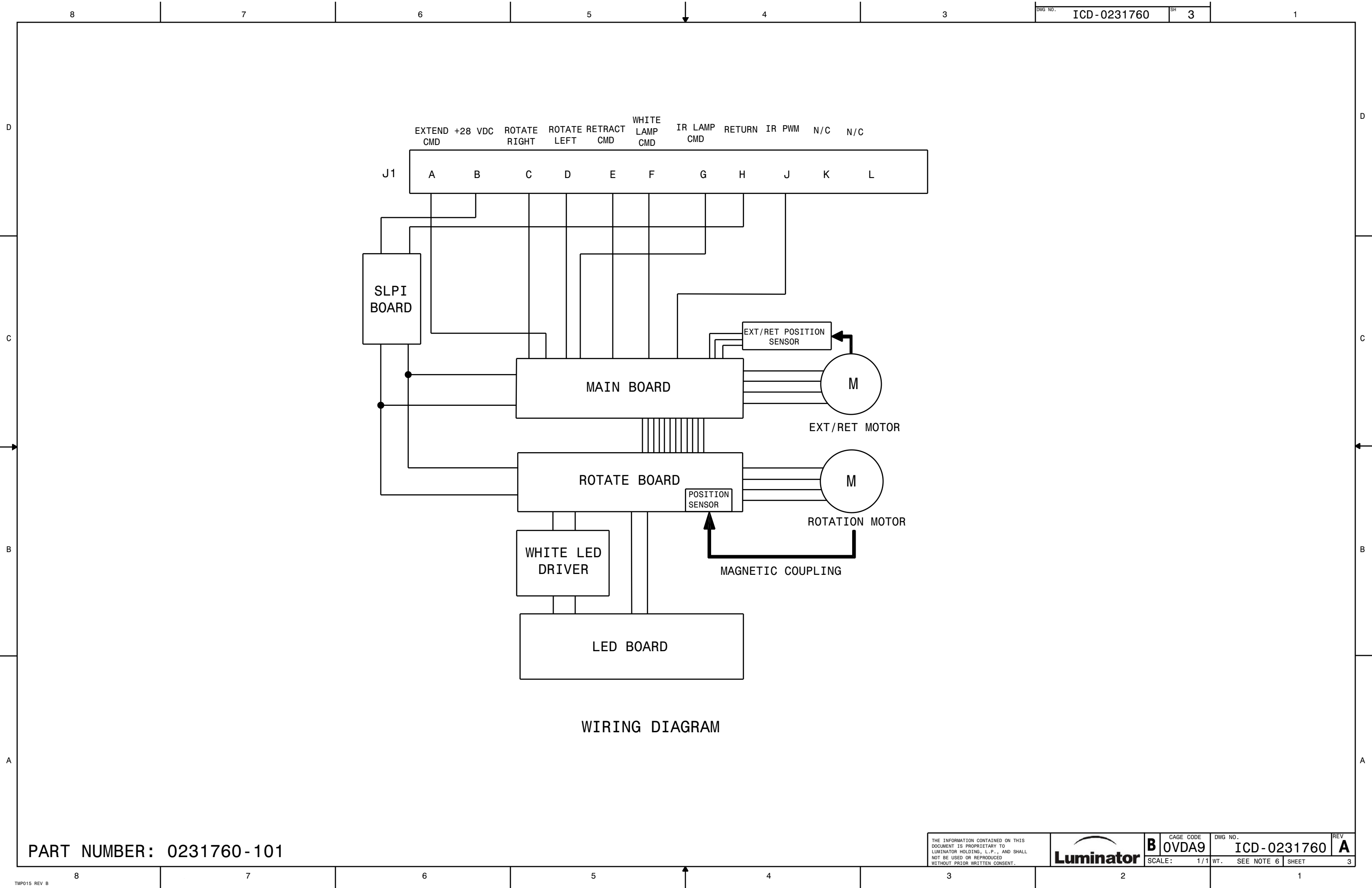
CAGE CODE
B 0VDA9

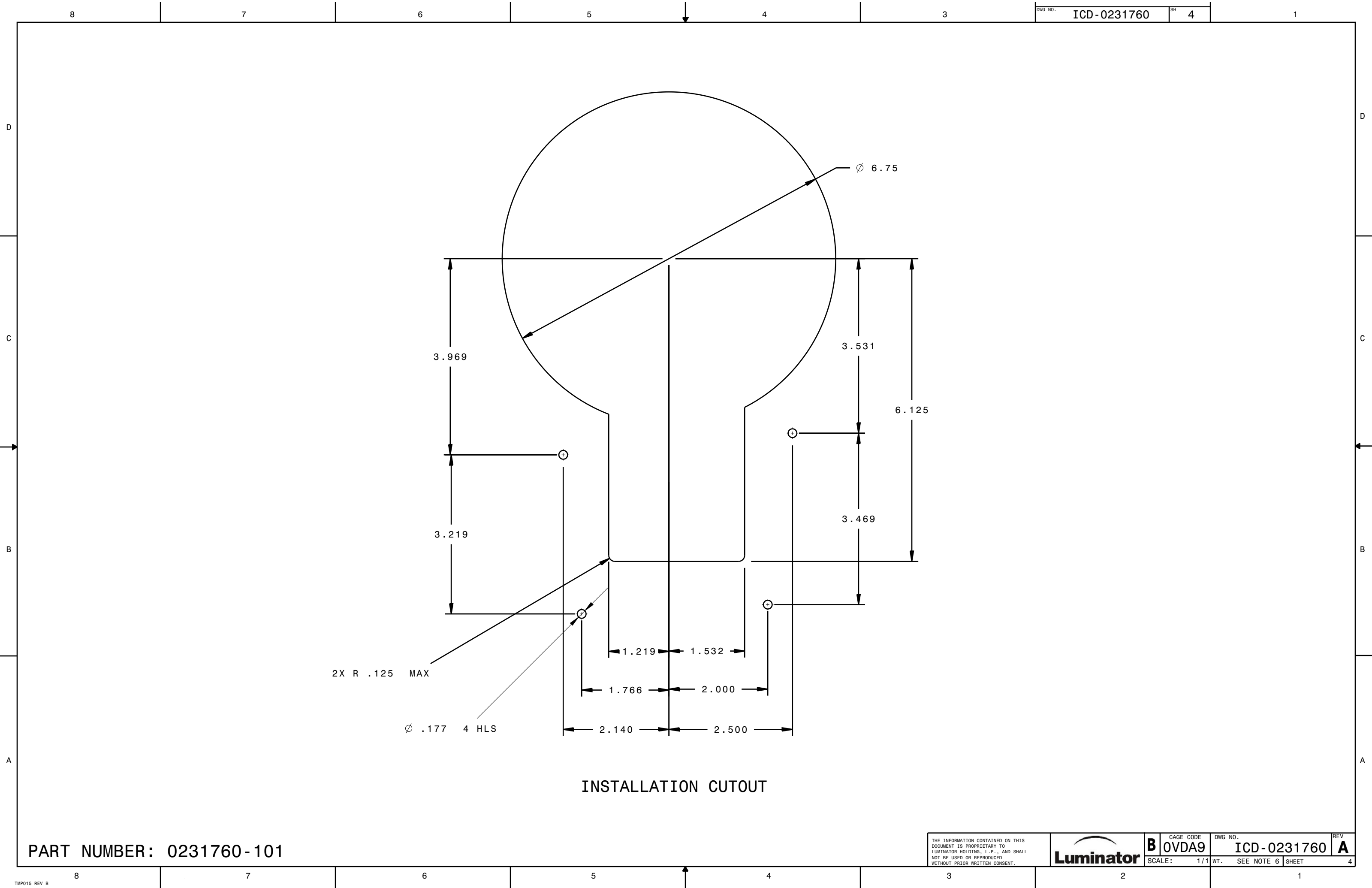
DWG NO.
ICD-0231760

SCALE: 1/1 WT. SEE NOTE 6 SHEET

REV
A

2





PART NUMBER: 0231760-101

THE INFORMATION CONTAINED ON THIS DOCUMENT IS PROPRIETARY TO LUMINATOR HOLDING, L.P., AND SHALL NOT BE USED OR REPRODUCED WITHOUT PRIOR WRITTEN CONSENT.



CAGE CODE
B 0VDA9

DWG NO.
ICD-0231760

REV
A

SCALE: 1/1 WT. SEE NOTE 6 SHEET 4