

8

7

6

5

4

3

DWG NO. ICD-0231687SH 11

NOTES: (UNLESS OTHERWISE SPECIFIED)

1. THIS ASSEMBLY IS A DUAL MODE (WHITE/VISIBLE AND IR) SEARCHLIGHT. THE SEARCHLIGHT ENVELOPE MEETS THE REQUIREMENTS OF MIL-L-81174/2B.

2. ILLUMINATION CHARACTERISTICS:

A. BEAM SPREAD (WHITE):9° - 10°

B. CANDLEPOWER:480,000 CD TYP.

C. BEAM SPREAD (IR):18° - 19°

D. IR INTENSITY:21 W/SR MAX. (NVIS-A)

3. ELECTRICAL CHARACTERISTICS:

A. INPUT VOLTAGE:28 VDC NOMINAL, 22 VDC MIN, 32 VDC MAX

B. MAX. POWER OF VISIBLE/WHITE ILLUMINATION:170 WATTS

C. MAX. POWER OF IR ILLUMINATION:10 WATTS

D. MAX. POWER @ MAX DEPLOYMENT SPEED WHILE EXTENDING & ROTATING & WHITE LIGHT AT 32VDC MAX:234 WATTS

E. MAX. POWER @ MAX DEPLOYMENT SPEED WHILE EXTENDING & ROTATING AT 32VDC MAX:64 WATTS (32 WATTS PER MOTOR)

4

MATING SURFACES CORRESPONDING TO THE INDICATED FAYING SURFACES ON THE SEARCHLIGHT BASE SHALL BE ELECTRICALLY CONDUCTIVE TO FACILITATE BONDING/GROUNDING OF THE SEARCHLIGHT CHASSIS.

5. SEARCHLIGHT CONTROL SWITCHES AND INTERCONNECT WIRING ARE CUSTOMER SUPPLIED AND ARE NOT INCLUDED AS PART OF THE SEARCHLIGHT.

6. MAXIMUM WEIGHT: 7.70 LBS

7

MARKING: ASSEMBLY SHALL BE IDENTIFIED IN ACCORDANCE WITH LPS-258.

8. FINISH:

THE EXTERNAL COVERS, BASE, AND ROTATION HOUSING ARE CHEMICAL CONVERSION COATED PER MIL-DTL-5541, FOLLOWED BY ONE COAT OF PRIMER HMS 15-1100, TYPE 1, CLASS 2, GRADE N, AND TWO COATS OF FLAT BLACK POLYURETHANE PAINT PER MIL-C-46168, TYPE IV, COLOR NO. 37038 PER FED-STD-595.

ALL SURFACES OF THE SEARCHLIGHT HEAD ARE CHEMICAL CONVERSION COATED PER MIL-DTL-5541 AND EXTERNAL SURFACES FURTHER ANODIZED PER MIL-A-8625 (BLACK).

9. THE SEARCHLIGHT IS CAPABLE OF EXTENDING AT A MAXIMUM AIRSPEED OR 120 KNOTS AND WILL HOLD ANY POSITION UP TO 180 KNOTS.

10. IR SAFETY:

WHEN "IR" IS ILLUMINATED, APPROPRIATE IR SAFETY GLASSES ARE REQUIRED BY ANY PERSONNEL UP TO 3 METERS FROM THE SEARCHLIGHT. THE IR CAN BE ILLUMINATED WITH OR WITHOUT THE WHITE LIGHT ENABLED.

WHITE/VISIBLE OR IR ILLUMINATION CAN BE ENABLED WHENEVER POWER IS SUPPLIED TO THE SEARCHLIGHT.

11. REQUIRED MOUNTING HARDWARE: QUANTITY OF 4 #8-32UNC FASTENERS.

CALCULATION OF MAXIMUM FASTENER LENGTH = 0.315" + AIRFRAME / MOUNTING SURFACE THICKNESS.

MOUNTING FASTENER LENGTHS SHALL NOT EXCEED THE MAXIMUM AS SPECIFIED HEREIN. SEARCHLIGHT MOVEMENT WILL BE IMPAIRED, BIND, AND MAY BE DAMAGED IF MOUNTING SCREW LENGTHS PROTRUDE FURTHER THAN 0.315" INTO THE SEARCHLIGHT, AS MEASURED FROM THE OUTER SURFACE OF THE SEARCHLIGHT BASE.

12. SEARCHLIGHT ILLUMINATE MAY BE ENABLED, EITHER VISIBLE/WHITE OR IR, WHEN EXTEND AND ROTATE ANGLES INTERSECT WITHIN "ILLUMINATION ENABLED" AREAS PER THE FIGURE BELOW. THE SEARCHLIGHT WILL NOT ILLUMINATE WHEN THE SEARCHLIGHT'S EXTEND AND ROTATE ANGLES INTERSECTION WITHIN EITHER OF THE "ILLUMINATION DISABLED" AREAS. THE SEARCHLIGHT MAY OR MAY NOT ILLUMINATE WITHIN THE TRANSITION ZONES.

ROTATE ANGLE (DEGREES)

18017016015014013012011010090807060060708090100110120130140150160170180

STOW

10

20

30

40

50

60

70

80

90

100

110

120

130

140

150

160

170

180

ILLUMINATION DISABLED

ILLUMINATION DISABLED

ILLUMINATION ENABLED

TRANSITION ZONE

TRANSITION ZONE

-102 MAX EXTEND

-101 MAX EXTEND

13. QTP NUMBER: 909775

QTR NUMBER: 909775

14. CONNECTOR: TERMINAL BLOCK WITH #6-32UNC-2A BINDING HEAD SCREWS

REFER TO TOP LEVEL ASSEMBLY DRAWING

INTERFACE CONTROL DRAWING

THE INFORMATION CONTAINED ON THIS DOCUMENT IS PROPRIETARY TO LUMINATOR HOLDING, L.P., AND SHALL NOT BE USED OR REPRODUCED WITHOUT PRIOR WRITTEN CONSENT.

THIRD ANGLE PROJECTION

UNLESS OTHERWISE SPECIFIED DIMENSIONS ARE IN INCHES

TOLERANCES ON 2 PLACE DECIMAL ±.02

3 PLACE DECIMAL ±.010

HOLE DIAMETER TOLERANCES .000-.500 +.005 -.001

.501-UP +.010 -.001

DESIGN ENG J.BELL

DATE 05-31-19

DRAWN D.FREY

DATE 05-31-19

MFG ENG N/A

DATE N/A

CHECKER L.GREGORY

DATE 06-24-19

APPROVAL J.BELL

DATE 06-05-19

TITLE

SEARCHLIGHT, LED, LS400T

CAGE CODE B0VDA9

DWG NO. ICD-0231687

REV F

SCALE: N/A

WT. SEE NOTE 6

SH NO. 1

OF 3

Plano, Texas

Luminator

0231687-102

PART NUMBER: 0231687-101

8

7

6

5

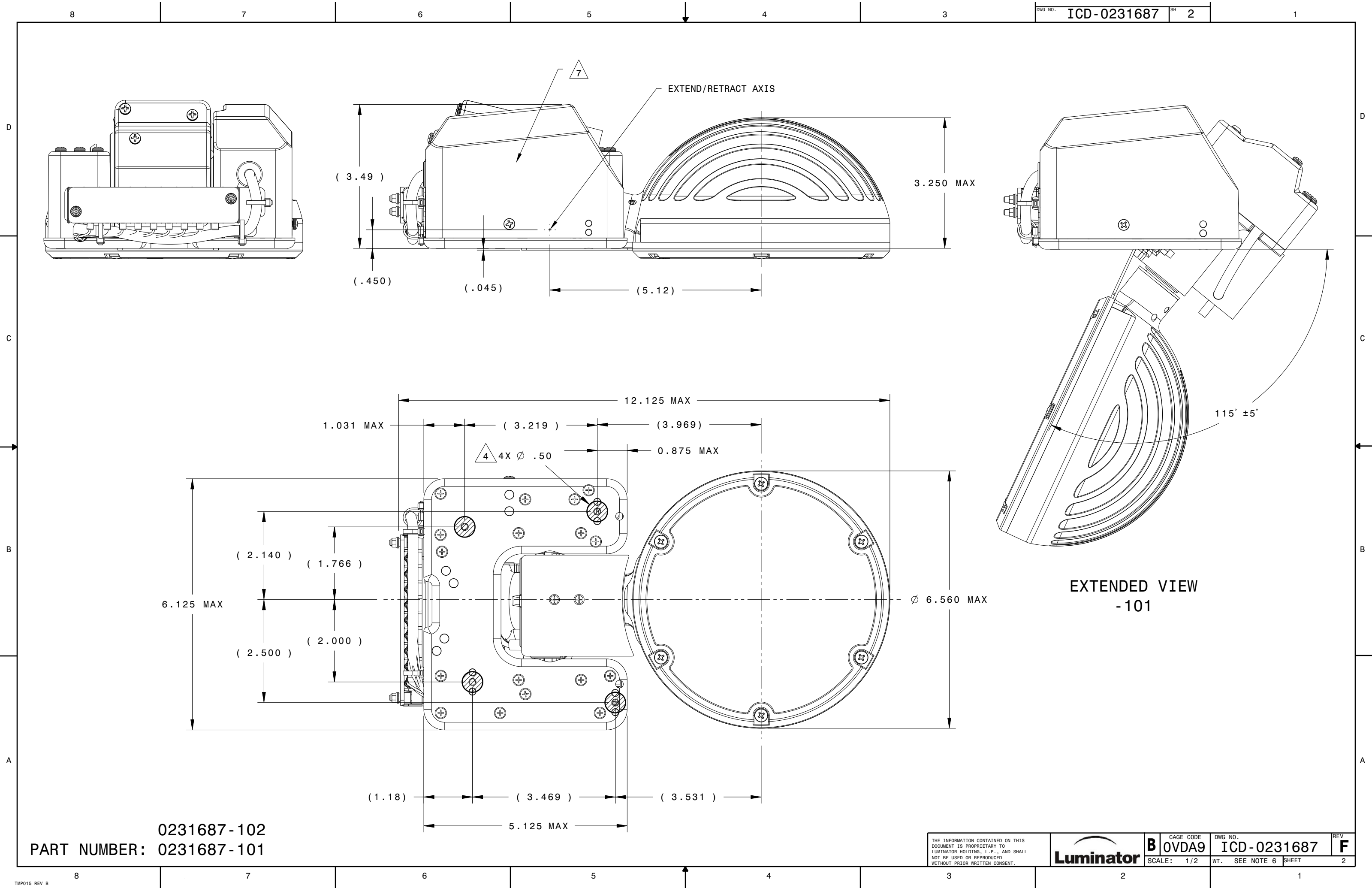
4

3

2

1

TMP015 REV B



0231687-102
PART NUMBER: 0231687-101

THE INFORMATION CONTAINED ON THIS
DOCUMENT IS PROPRIETARY TO
LUMINATOR HOLDING, L.P., AND SHALL
NOT BE USED OR REPRODUCED
WITHOUT PRIOR WRITTEN CONSENT.

Luminator

CAGE CODE
B 0VDA9

DWG NO.
ICD-0231687

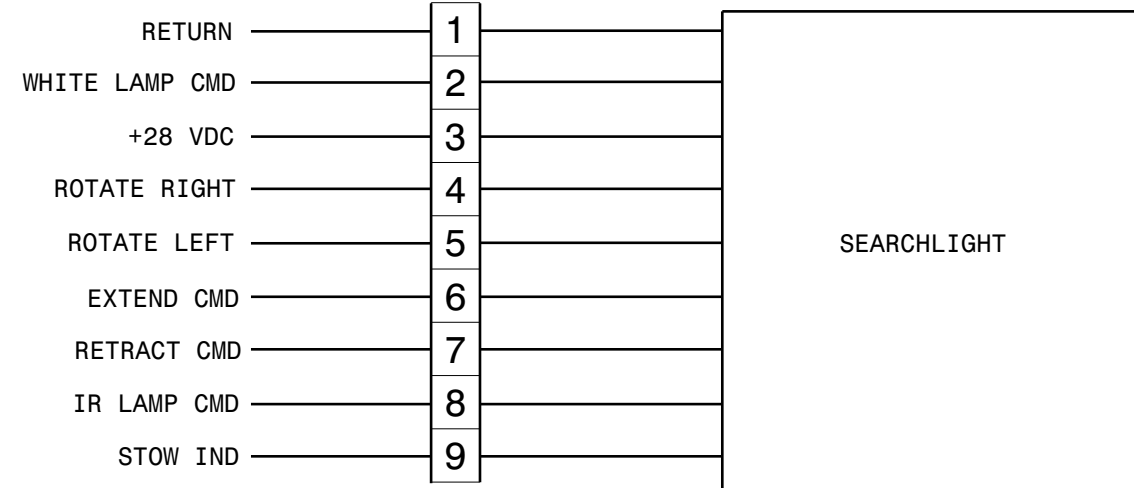
REV
F

SCALE: 1/2

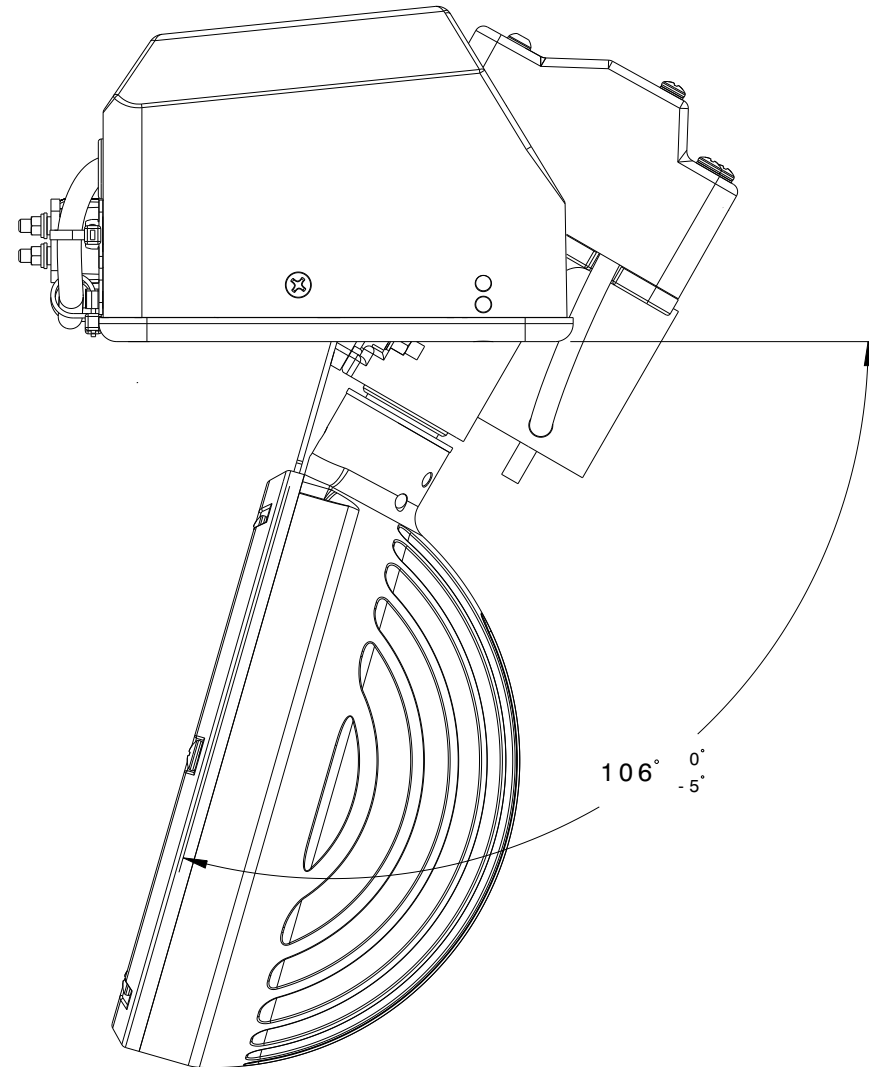
WT. SEE NOTE 6 SHEET

2

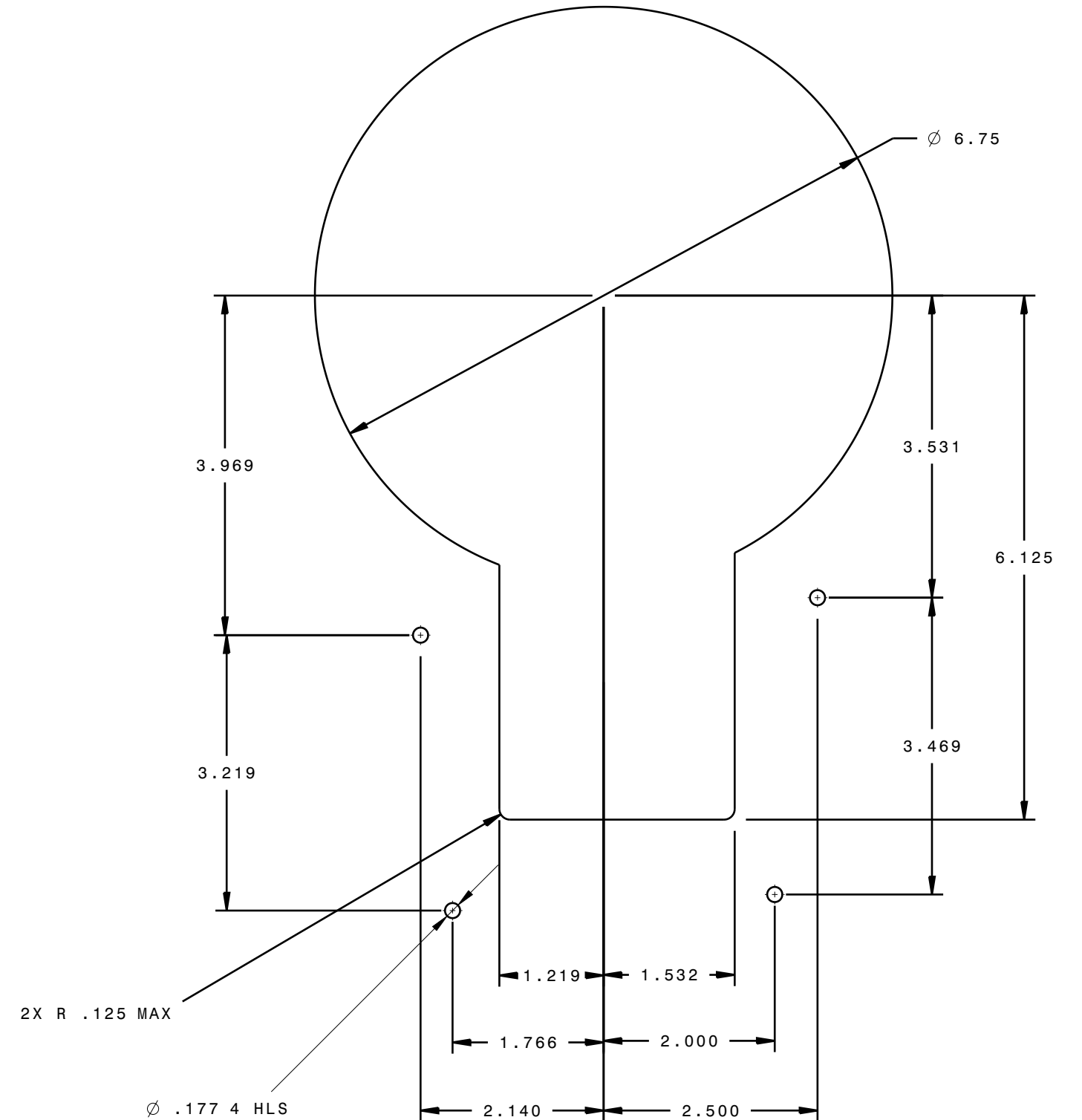
TERMINAL BLOCK



ELECTRICAL CONNECTIONS



INSTALLATION CUTOUT



PART NUMBER: 0231687-101

EXTENDED VIEW
-102