

NOTES: (UNLESS OTHERWISE SPECIFIED)

1. THIS ASSEMBLY IS A DUAL MODE (WHITE/VISIBLE AND IR) SEARCHLIGHT. EXCLUDING THE EXTERNAL HARNESS, THE SEARCHLIGHT ENVELOPE MEETS THE REQUIREMENTS OF MIL-L-81174/2B.

2. ILLUMINATION CHARACTERISTICS:

- A. BEAM SPREAD (WHITE): 9° - 10°
B. CANDLEPOWER: 480,000 CD TYP.
C. BEAM SPREAD (IR): 18° - 19°
D. IR INTENSITY: 21 W/SR MAX. (NVIS-A)

3. ELECTRICAL CHARACTERISTICS:

- | | | |
|----|--|--|
| A. | INPUT VOLTAGE: | 28 VDC NOMINAL, 22 VDC MIN, 32 VDC MAX |
| B. | MAX. POWER OF VISIBLE/WHITE ILLUMINATION: | 123 WATTS |
| C. | MAX. POWER OF IR ILLUMINATION: | 5 WATTS |
| D. | MAX. POWER OF LOCKED EXTEND/RETRACT MOTOR: | 150 WATTS |
| E. | MAX. POWER OF LOCKED ROTATE MOTOR: | 150 WATTS |

- 4 MATING SURFACES CORRESPONDING TO THE INDICATED FAYING SURFACES ON THE SEARCHLIGHT BASE SHALL BE ELECTRICALLY CONDUCTIVE TO FACILITATE BONDING/GROUNDING OF THE SEARCHLIGHT CHASSIS.

5. SEARCHLIGHT CONTROL SWITCHES AND INTERCONNECT WIRING ARE CUSTOMER SUPPLIED AND ARE NOT INCLUDED AS PART OF THE SEARCHLIGHT.

6. MAXIMUM WEIGHT: 7.80 LBS

- 7 MARKING:
ASSEMBLY SHALL BE IDENTIFIED IN ACCORDANCE WITH LPS-258.

8. FINISH:

THE EXTERNAL COVERS, BASE, AND ROTATION HOUSING ARE CHEMICAL CONVERSION COATED PER MIL-DTL-5541, FOLLOWED BY ONE COAT OF PRIMER HMS 15-1100 TYPE 1, CLASS 2, GRADE N, AND TWO COATS OF FLAT BLACK POLYURETHANE PAINT PER MIL-C-46168, TYPE IV, COLOR NO. 37038 PER FED-STD-595.

ALL SURFACES OF THE SEARCHLIGHT HEAD ARE CHEMICAL CONVERSION COATED PER MIL-DTL-5541, AND EXTERNAL SURFACES FURTHER ANODIZED PER MIL-A-8625 (BLACK).

9. THE SEARCHLIGHT IS CAPABLE OF EXTENDING AT A MAXIMUM AIRSPEED OF 120 KNOTS AND WILL HOLD ANY POSITION UP TO 180 KNOTS.

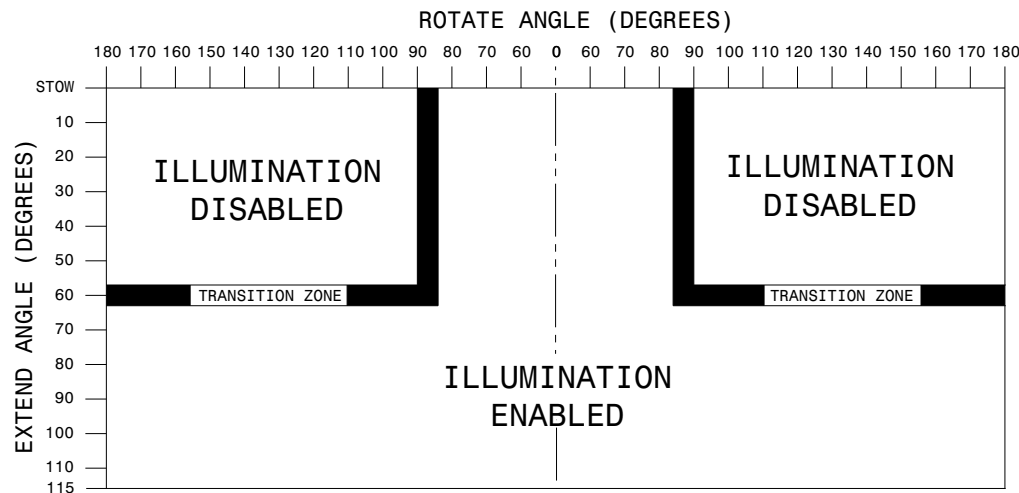
10. IR SAFETY:
WHEN "IR" IS ILLUMINATED, APPROPRIATE IR SAFETY GLASSES ARE REQUIRED BY ANY PERSONNEL UP TO 3 METERS FROM THE SEARCHLIGHT. THE IR CAN BE ILLUMINATED WITH OR WITHOUT THE WHITE LIGHT ENABLED. WHITE/VISIBLE OR IR ILLUMINATION CAN BE ENABLED WHENEVER POWER IS SUPPLIED TO THE SEARCHLIGHT.

11. REQUIRED MOUNTING HARDWARE: QUANTITY 4 OF #8-32UNC FASTENERS.

CALCULATION OF MAXIMUM FASTENER LENGTH = 0.315" + AIRFRAME / MOUNTING SURFACE THICKNESS.

MOUNTING FASTENER LENGTHS SHALL NOT EXCEED THE MAXIMUM AS SPECIFIED HEREIN. SEARCHLIGHT MOVEMENT WILL BE IMPAIRED, BIND AND MAY BE DAMAGED IF MOUNTING SCREW LENGTH PROTRUDE FURTHER THAN 0.315" INTO THE SEARCHLIGHT, AS MEASURED FROM THE OUTER SURFACE OF THE SEARCHLIGHT BASE.

12. SEARCHLIGHT ILLUMINATE MAY BE ENABLED, EITHER VISIBLE/WHITE OR IR, WHEN EXTEND AND ROTATE ANGLES INTERSECT WITHIN "ILLUMINATION ENABLED" AREAS PER THE FIGURE BELOW. THE SEARCHLIGHT WILL NOT ILLUMINATE WHEN THE SEARCHLIGHT EXTEND AND ROTATE ANGLES INTERSECT WITHIN EITHER OF THE "ILLUMINATION DISABLED" AREAS. THE SEARCHLIGHT MAY OR MAY NOT ILLUMINATE WITHIN THE TRANSITION ZONES.

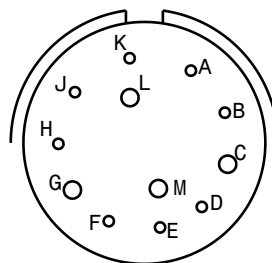


13. QTP NUMBER: 909775
QTR NUMBER: 909775

14. CONNECTOR PART NUMBER: D38999-20FD97PN

- ## 15. CONNECTOR PIN ASSIGNMENT:

0231674-101 PINOUT	
A	STOW IND
B	WHITE LAMP CMD
C	SYSTEM GROUND
D	ROTATE RIGHT
E	ROTATE LEFT
F	EXTEND
G	LAMP GROUND
H	RETRACT
J	IR LAMP CMD
K	STOW CMD
L	+28 VDC
M	NOT USED




CONNECTOR PINS

0231674-102 PINOUT	
A	WHITE LAMP CMD
B	NOT USED
C	SYSTEM GROUND
D	ROTATE RIGHT
E	ROTATE LEFT
F	EXTEND
G	LAMP GROUND
H	RETRACT
J	STOW IND
K	IR LAMP CMD
L	+28 VDC
M	NOT USED

16. LAND COMMAND IS CONTROLLED THROUGH A WIRE THAT EXTENDS OUT OF THE MAIN CONNECTOR.

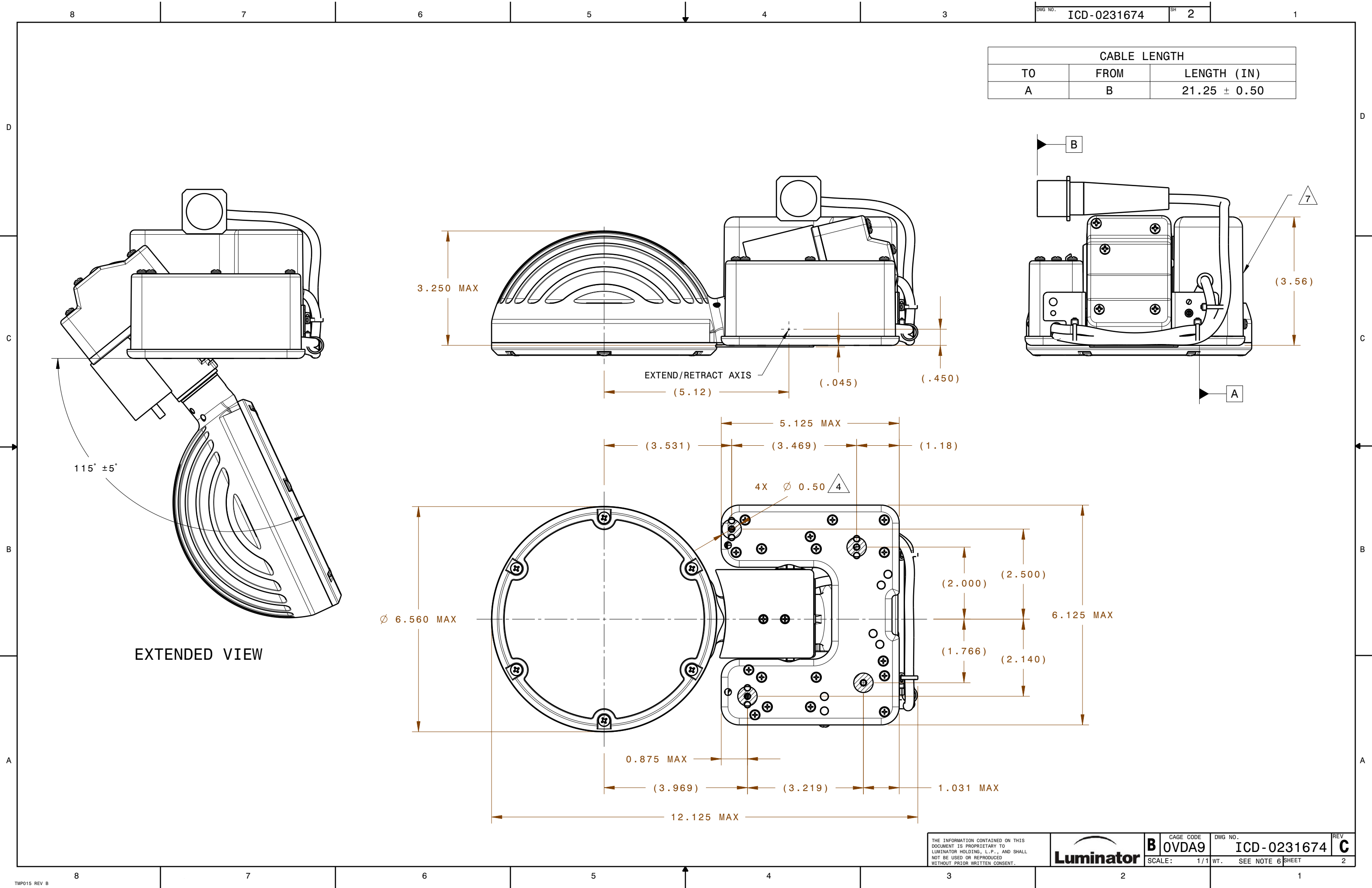
REFER TO TOP LEVEL ASSEMBLY DRAWING

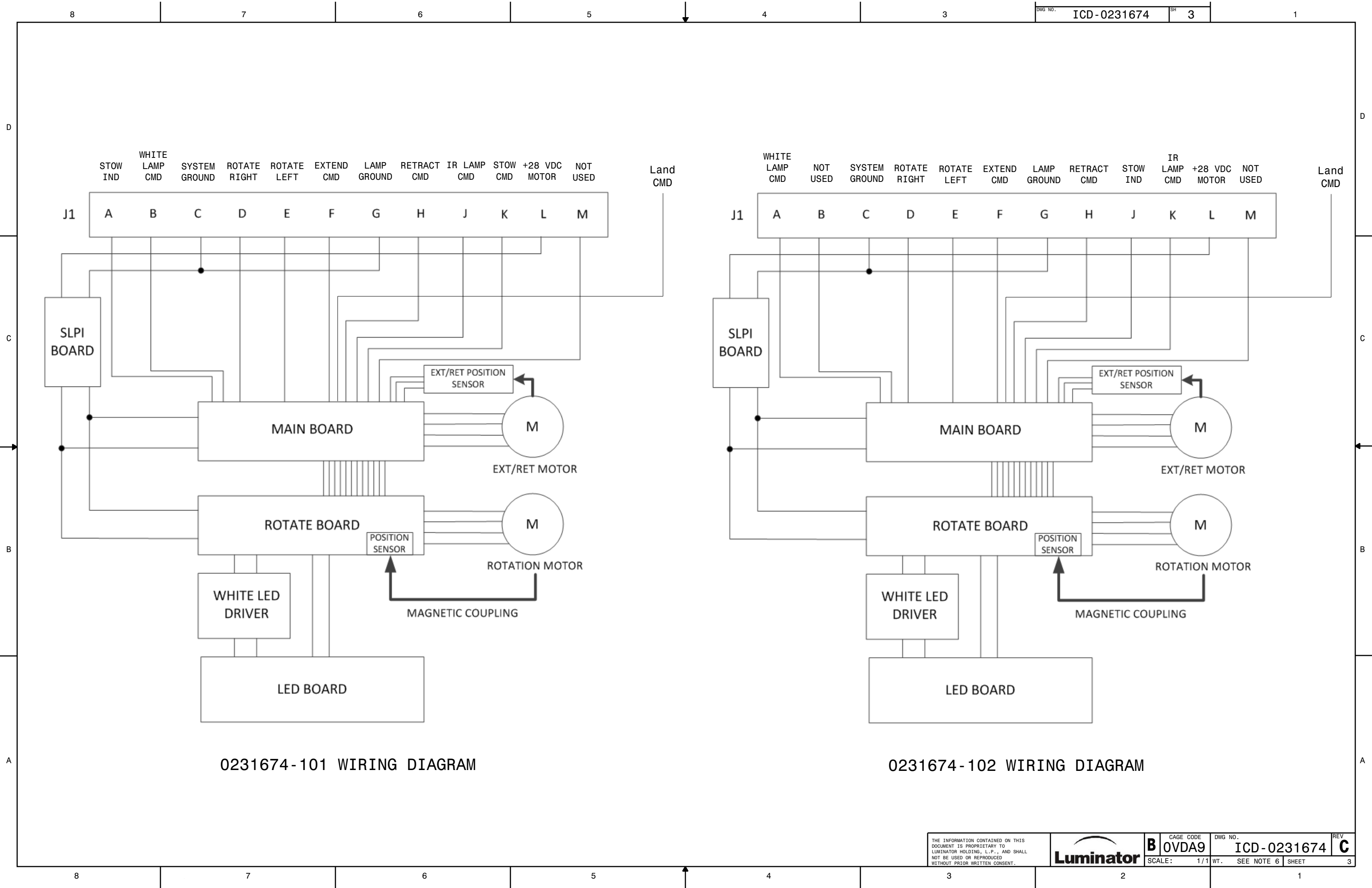
INTERFACE CONTROL DRAWING

		UNLESS OTHERWISE SPECIFIED	DESIGN ENG	DATE	 <div style="text-align: right;">Plano, Texas</div>				
		DIMENSIONS ARE IN INCHES	JDB	01-31-19					
		TOLERANCES ON	DRAWN	DATE					
		2 PLACE DECIMAL ±.02	3 PLACE DECIMAL ±.010	JDB 01-31-19					
			MFG ENG	DATE	<div style="text-align: center;"> ICD, SEARCHLIGHT, LED, LS400 </div>				
		HOLE DIAMETER TOLERANCES	EW	02-12-19					
		.000-.500 .005 -.001	CHECKER RH	DATE 02-13-19					
		.501-UP .010 -.001	APPROVAL	DATE					
FINAL	FINAL				<div style="display: flex; justify-content: space-between;"> <div style="border: 1px solid black; padding: 2px;"> B </div> <div style="border: 1px solid black; padding: 2px;"> CAGE CODE OVDA9 </div> <div style="border: 1px solid black; padding: 2px;"> DWG NO. ICD-0231674 </div> <div style="border: 1px solid black; padding: 2px;"> REV C </div> </div>				
NEXT ASSY	USED ON				<div style="display: flex; justify-content: space-between;"> <div>SCALE:</div> <div>1/1</div> <div>WT.</div> <div>SEE NOTE 6</div> <div>SH NO.</div> <div>1 OF 4</div> </div>				
APPLICATION		ANGLES ±1°							

0231674-102

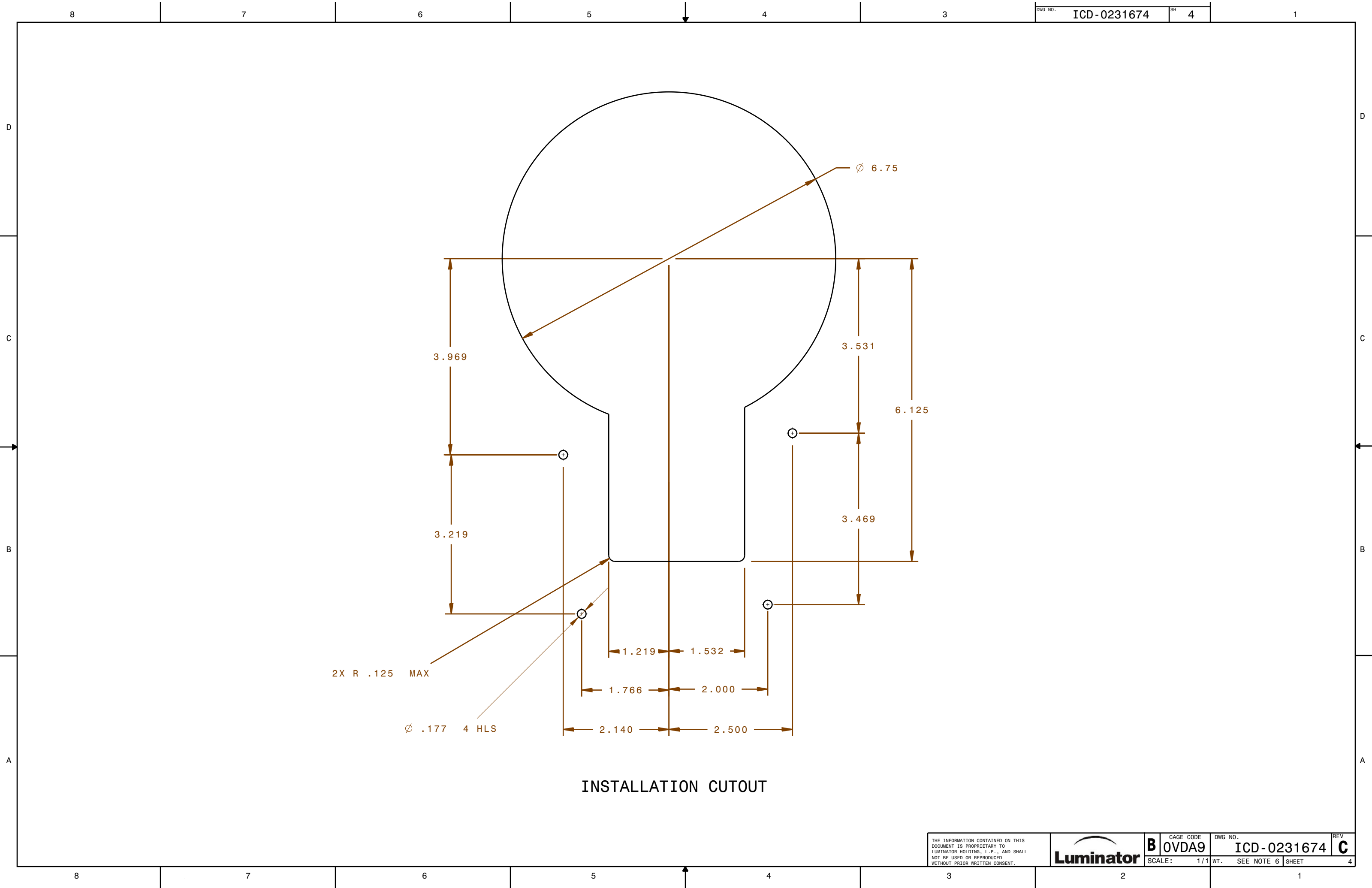
PART NUMBER: 0231674-101





0231674-101 WIRING DIAGRAM

0231674-102 WIRING DIAGRAM



INSTALLATION CUTOUT